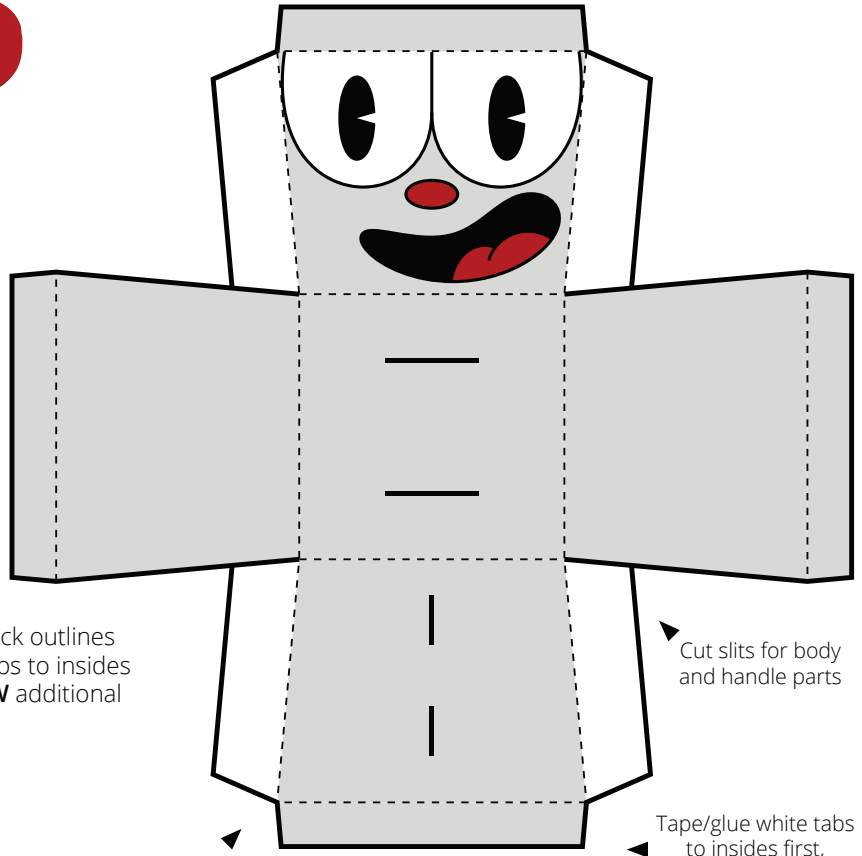
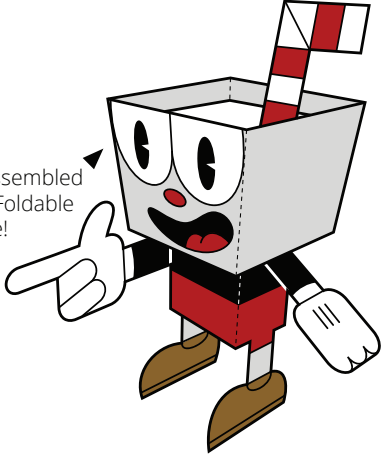


CUPHEAD

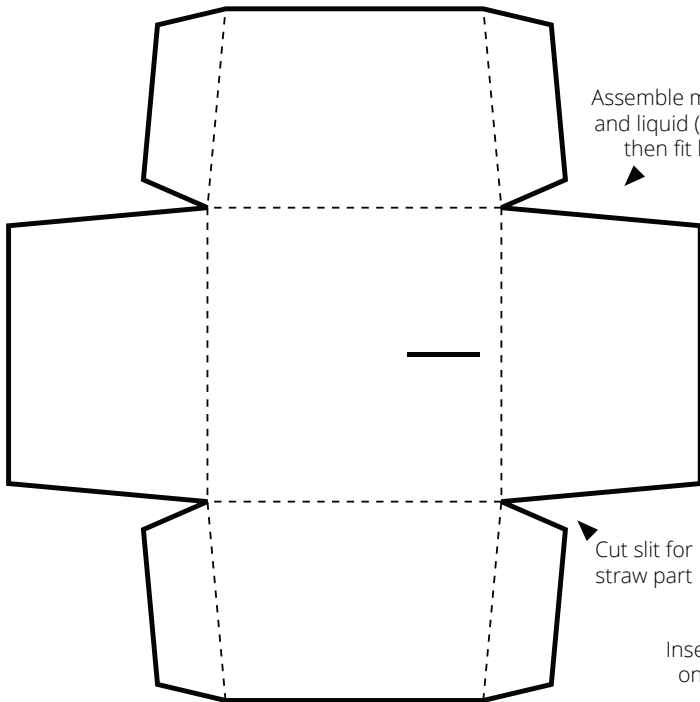
This is what your assembled
CUPHEAD Paper Foldable
will look like!



Cut slits for body
and handle parts

Tape/glue white tabs
to insides first,
then grey mug sides

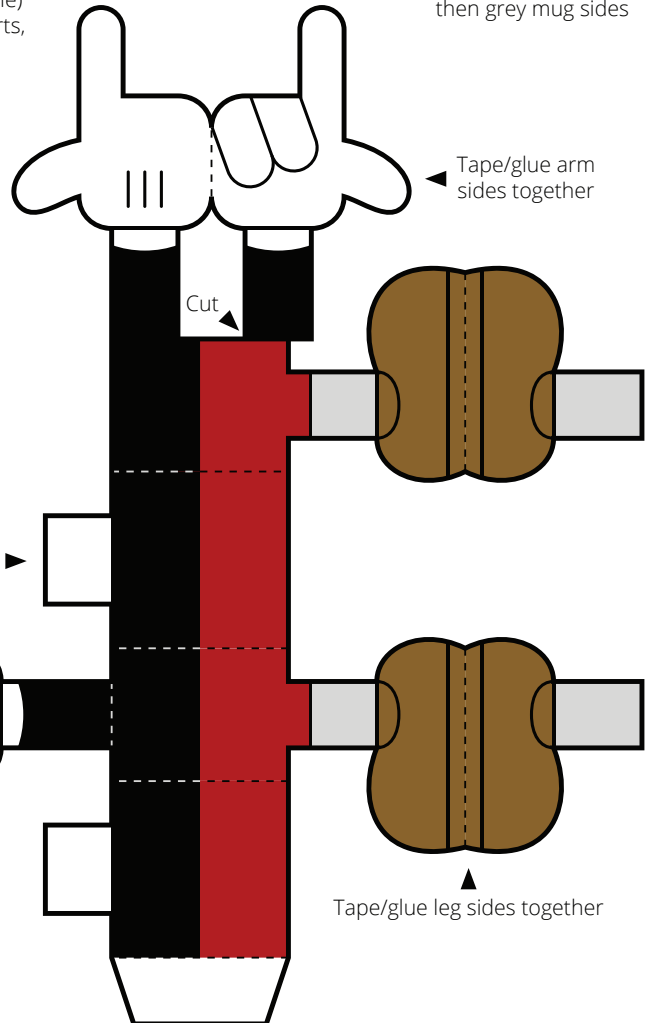
PRINT template on card stock paper. **CUT** along solid black outlines and slits. **FOLD** on dashed lines. **TAPE** or **GLUE** folded tabs to insides (double-sided tape or glue stick recommended). **FOLLOW** additional assembly instructions and **HAVE FUN!**



Assemble mug (with handle)
and liquid (with straw) parts,
then fit liquid into cup

Cut slit for
straw part

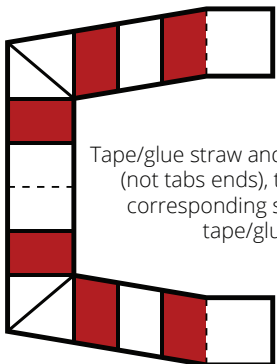
Insert tabs in slits
on cup bottom



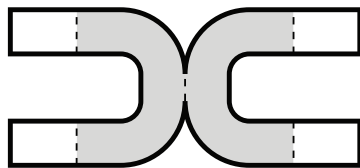
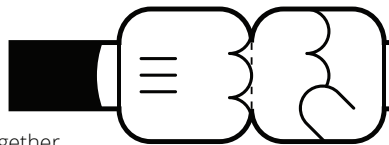
Tape/glue arm
sides together

Cut

Tape/glue leg sides together

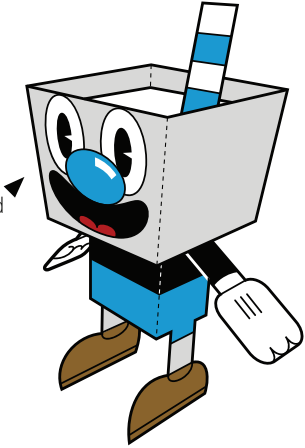


Tape/glue straw and handle sides together
(not tabs ends), then insert tabs into
corresponding slits, splay tabs, and
tape/glue to insides

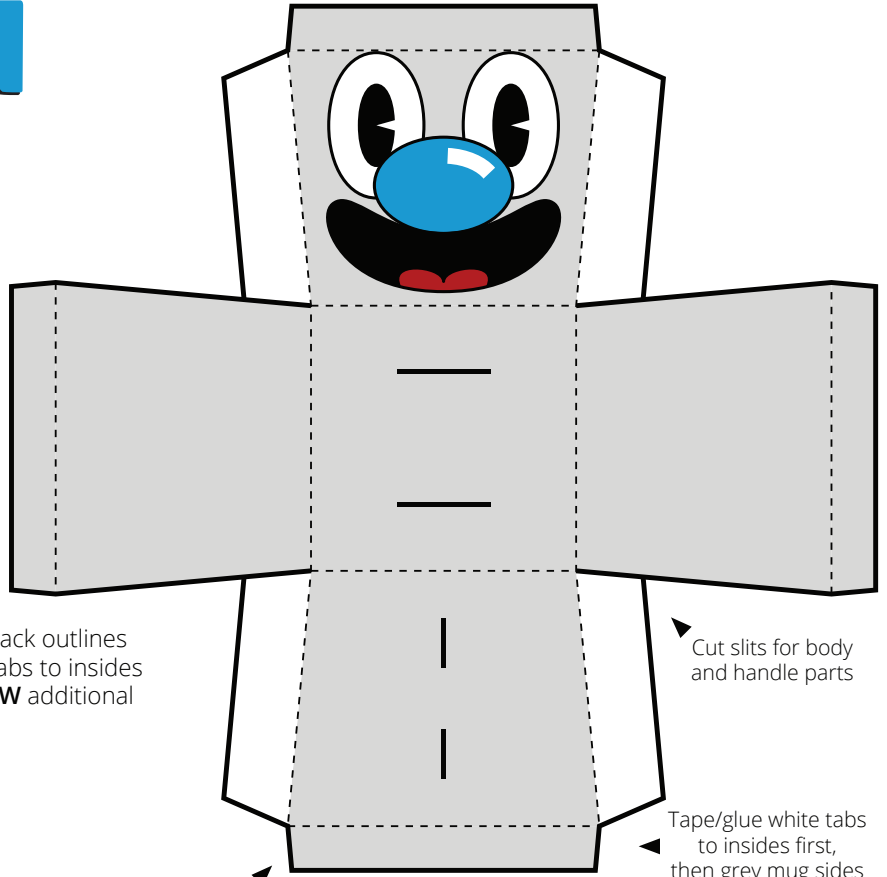


CUPHEAD

MUGMAN



This is what your assembled **MUGMAN** Paper Foldable will look like!

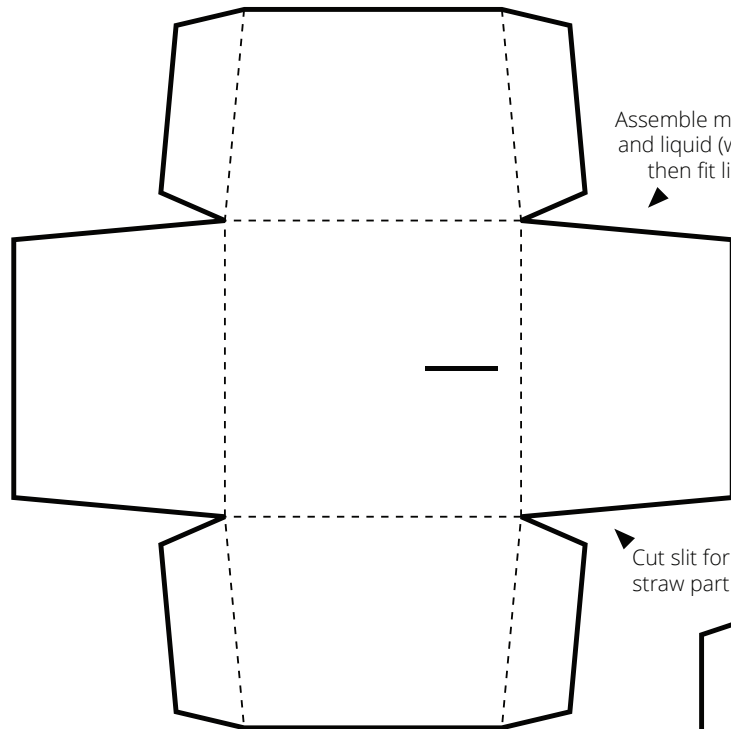


Cut slits for body and handle parts

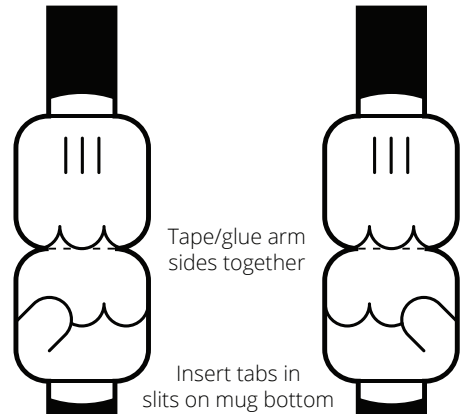
Tape/glue white tabs to insides first, then grey mug sides

PRINT template on card stock paper. **CUT** along solid black outlines and slits. **FOLD** on dashed lines. **TAPE** or **GLUE** folded tabs to insides (double-sided tape or glue stick recommended). **FOLLOW** additional assembly instructions and **HAVE FUN!**

Assemble mug (with handle) and liquid (with straw) parts, then fit liquid into cup

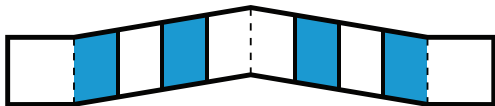


Cut slit for straw part

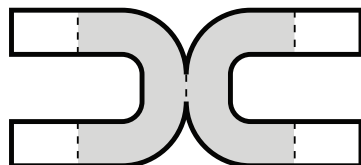


Tape/glue arm sides together

Insert tabs in slits on mug bottom



Tape/glue straw and handle sides together (not tabs ends), then insert tabs into corresponding slits, splay tabs, and tape/glue to insides



Tape/glue leg sides together